

SMMS 6.0 Features

This section describes some of the features that help SMMS stand apart from the rest of the pack.

Multi-Company / Multi-Divisional Environment

The structure of the SMMS system allows for virtually *unlimited* business entities. You may create up to 99 separate companies, and within each company, an unlimited number of separate divisions.



This feature enables users at different plants and physical locations to define and use the system independently of one another, keeping their data and reporting separated. Security is also defined separately for each plant / division.

For management purposes, reporting takes place at the Company level, the Company/Division level, or consolidated for all companies.

Remote plant locations can access the system over the internet from anywhere in the world. This greatly reduces your communication expenses while allowing all plant locations to operate from the same centralized database.

Centralization helps distinct reporting entities share information, using consistent nomenclature, sharing parts inventory, and sharing procedural expertise.

Dual User Interface

SMMS Version 6 operates in the graphical Windows® interface as well as on traditional character-based terminals. This flexibility allows users to work with the system in the familiar Microsoft Outlook® style, while continuing to use character-based terminals in the more demanding environmental extremes in manufacturing plants.

Whether you're connected graphical or "green screen," locally or internet, all users have identical functionality and capabilities. And regardless of the interface selected, SMMS still features the power, security and reliability of the IBM iSeries/400 server family.



User-defined Nomenclature

You can tailor SMMS menus, screens and report headings to the language of your business! The ability to rename screen and report headings makes the system easier to understand and learn because your maintenance users aren't required to accept new terminology for familiar concepts.



From a single screen you can rename and cast your own nomenclature for Company, Equipment, Parts, Cost Center, Procedures, and many other system concepts. These renamed terms are instantly applied to program names, screens and reports.

Equipment Locations & Sub-locations

While the Company / Division establishes the basic reporting entity of SMMS, you can also refine in-plant equipment areas by defining equipment locations and sub-locations. This makes it easy to identify equipment codes, group equipment, and review maintenance expenses.

Vendor Contracts

If your Company uses “outsourcing” for one-time or repetitive maintenance operations, you’ll appreciate SMMS’ vendor quotation and outsource management capabilities.

Simple set-up vendor task lists (identifying the work to be performed) and issue quotations for vendor contract work through the SMMS system. As the vendor quotations are received, enter each quote into the quotation file, indicate a preferred vendor or contract number, and SMMS will automatically release a requisition for the preferred vendor when a Work Order is entered requiring the vendor task.



The system also ties the requisition to the work order, giving you a permanent record of the vendor work performed as part of your work order and equipment maintenance history records.

Bar Code & PDA Technology

Print and scan bar coded work orders, purchase orders, inventory tickets, equipment and other transaction documents to ensure data integrity and efficiency.



Bar coding is a part of the standard SMMS software--- not an expensive add-on! The use of bar coding helps you report and record information faster and more accurately, improving the quality and timeliness of information in your SMMS system. You save time and labor, and implement faster.

No special printing capabilities are required for bar code printing. All you'll need is an inexpensive laser printer attached to your PC workstation.

Use portable data terminals and scanners to organize, track and report work completed, conduct inventory counts, and request new work orders and parts requisitions. Review the document "Bar Code Scanning Options" on our Downloads page for additional information on scanners supported by SMMS.

Costing & Budgeting Options

SMMS offers you four options for costing your MRO inventory parts. Choose between average cost, weighted average cost, standard cost, and replacement cost.

Vendor contracts and sub-contracts include separate elements for material and labor costs, as well as three user-defined cost elements.

Labor has three costing options in SMMS. You can choose to cost labor at the company / division labor, by defining a standard labor cost to be applied uniformly. For a finer cut of labor cost, define labor rates as part of the "Labor Grades" used in your plant. Finally, you can apply labor rates at the employee level for the most accurate labor cost.



Cost Centers allow you to define the departments in your organization responsible for maintenance costs, and enter budgets by cost center to track actual versus expected costs, and review variances.

Cost Center links are applied to Equipment, Parts, Work Orders, and Purchase Orders by default, and constitute the primary method for comparing "actual versus budget" in reporting.

Cost Centers can also be used to identify and "charge back" maintenance costs to responsible departments.

Management Reporting & Inquiries

SMMS reports and inquiry displays enable management to look at current and historical maintenance information from a wide variety of viewpoints. Reporting may be for a single company, or consolidated over all companies.

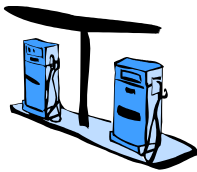
If you don't see the report you need, or if you have a special one time requirement, the design of the SMMS database makes creating AS/400 queries a snap!



You can also query SMMS data using our information downloading tools. Information from the SMMS database can be extracted from the system and placed into Microsoft® Excel® or comma-delimited text formats for review and analysis by popular pc-based tools.

Equipment Groups

"Master Equipment" items allow you to combine individual equipment items to form "Equipment Groups". Equipment Groups enable you to create "parent/child" relationships between equipment members thus defining assembly lines and production groups for reporting individually or collectively.



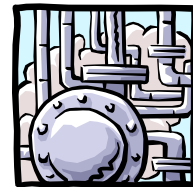
You can produce combined history reports showing the costs, labor hours, parts usage, and other relevant information for an Equipment Group.

For example, report separately on each piece of equipment in a production line, and/or report on the production line as a whole.

Name Plate and User-Defined Fields

Equipment Categories group equipment items with common characteristics. When you establish an equipment category in SMMS, you can define up to ten distinct name plate characteristics to record and track for all members of that category.

In addition to Equipment Categories and name plate information, you can also create up to 99 user-defined fields for tracking parts, equipment and employees. User-defined fields allows you to define, enter and track unique data elements without the need for custom programming or database changes.



There is also a separate Manufacturer database that keeps track

of part and equipment manufacturers, allowing you to centralize your manufacturer and contact information.

Project Management

Beyond the traditional maintenance tasks, you can also organize your activities into projects...allowing you to separately budget and track special jobs such as machine rebuilding or the installation of new equipment, environmental systems and other types of non-recurring responsibilities.



Give your project a start and end date, and define estimates for labor hours, labor costs, and part costs. Use progress reports to compare estimated costs with actual, and to separate special project work from ongoing maintenance requirements.

Since each project is budgeted independently, you can create budget variance reporting for special projects outside of the annual cost center budget.

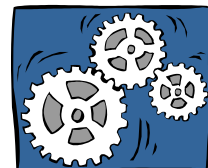
Consolidated Inventory and Corporate Equipment and Parts

SMMS consolidated inventory screens allow authorized users to look at parts availability across the organization, even if the plant sites use different standards for part coding.

The Corporate Part Master and Corporate Equipment Master databases allow the multi-location companies to implement SMMS according to locally-defined standards for naming and organizing data, and still have common look-ups to make it easy to find similar equipment and parts across sites and warehouses.

Work Order Flexibility

Any good maintenance system is work order driven, and SMMS makes entering and reporting work orders a breeze! Use work orders to schedule preventive maintenance, perform corrective maintenance, and report emergency repairs. Work orders are also used to perform special projects, and respond to user work requests for non-scheduled maintenance.



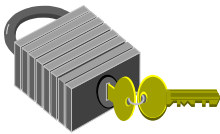
Standardized procedures --- predefined work lists --- make entering new work orders fast and easy, and ensure the work is performed consistently. You make your procedures as comprehensive, or as generic, as you think is appropriate to the job. Add labor requirements, parts, tools and tasks as you see fit to ensure consistency and clarity in the work required.

You can also change work order equipment and procedure codes after the order has been entered. This allows you to respond to work requests more effectively, and to create non-scheduled order paperwork in advance of need. The correct equipment and procedure codes are entered with the completion data.

Security

Because the SMMS system is a multi-plant, multi-division multi-user system, security is an important feature! The goal is to make sure your users have access to the information they need to do their job, while preventing access to information reserved for management!

Use SMMS security to control access to your Company's information. Define access to menu options, company information, and user defaults. Users can be restricted partially or completely from each company in your system. Likewise, authority for "add/change/delete" functions may also be established at the Company level (as well as by the individual application.)



SMMS separates "inquiry displays and reports" from "maintenance screens" to ensure that unauthorized users are restricted from add, change and delete programs.

You also control user access to sensitive data elements, such as budget and cost data and employee rates.

Balance Labor Workload



In today's business environment, it's more important than ever to manage your labor resources carefully.

Use SMMS to review your labor requirements, by craft group or employee detail, and balance your PM schedules to avoid costly overtime while ensuring that labor resources do not stand idle.

Physical Inventory

The SMMS system provides all the features and functions you need to manage your inventory of maintenance and repair parts.

Implement as many --- or as few --- of the inventory features as are appropriate to your business:



automatic or manual purchasing, physical inventory and cycle counting, random location management, inventory costing, vendor and equipment cross-reference files updated automatically.

Use the SMMS purchasing module to plan and create requisitions for your purchasing department, or purchase MRO items yourself by creating SMMS purchase orders.